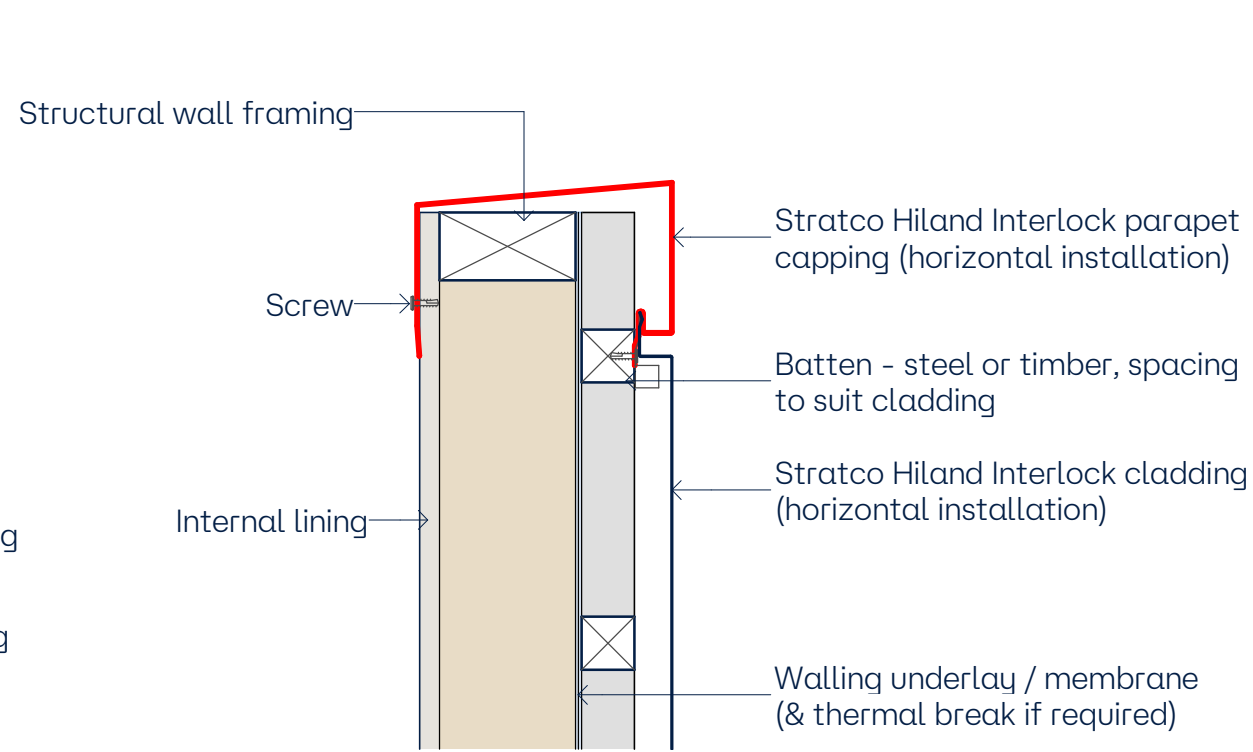
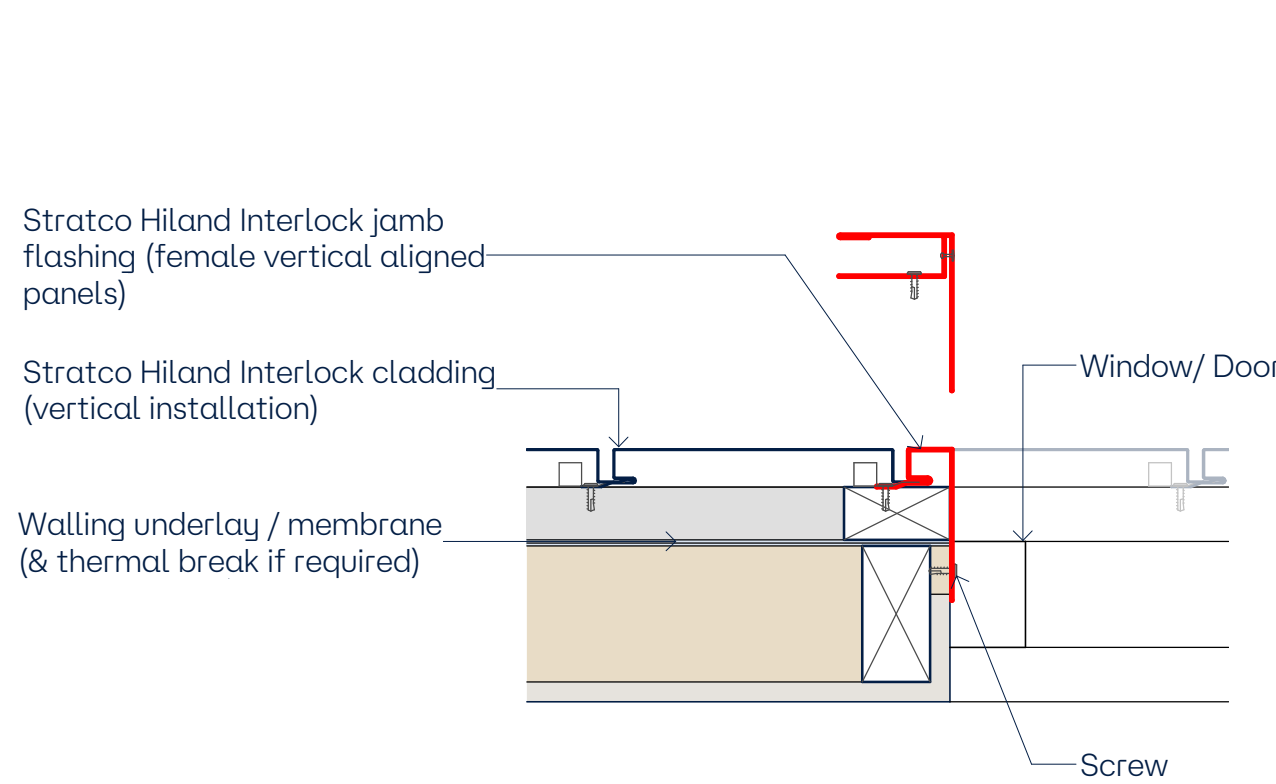


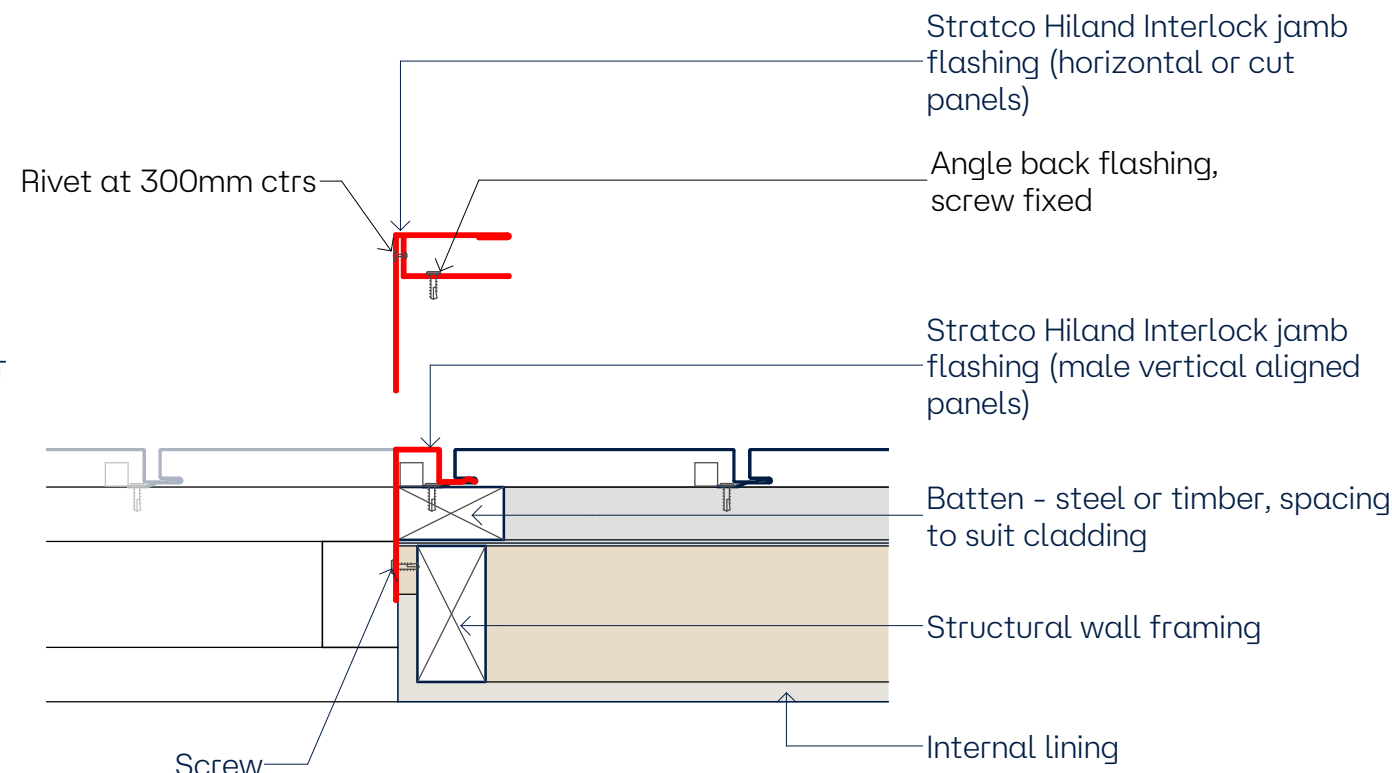
1 Hiland Interlock Parapet
1:5



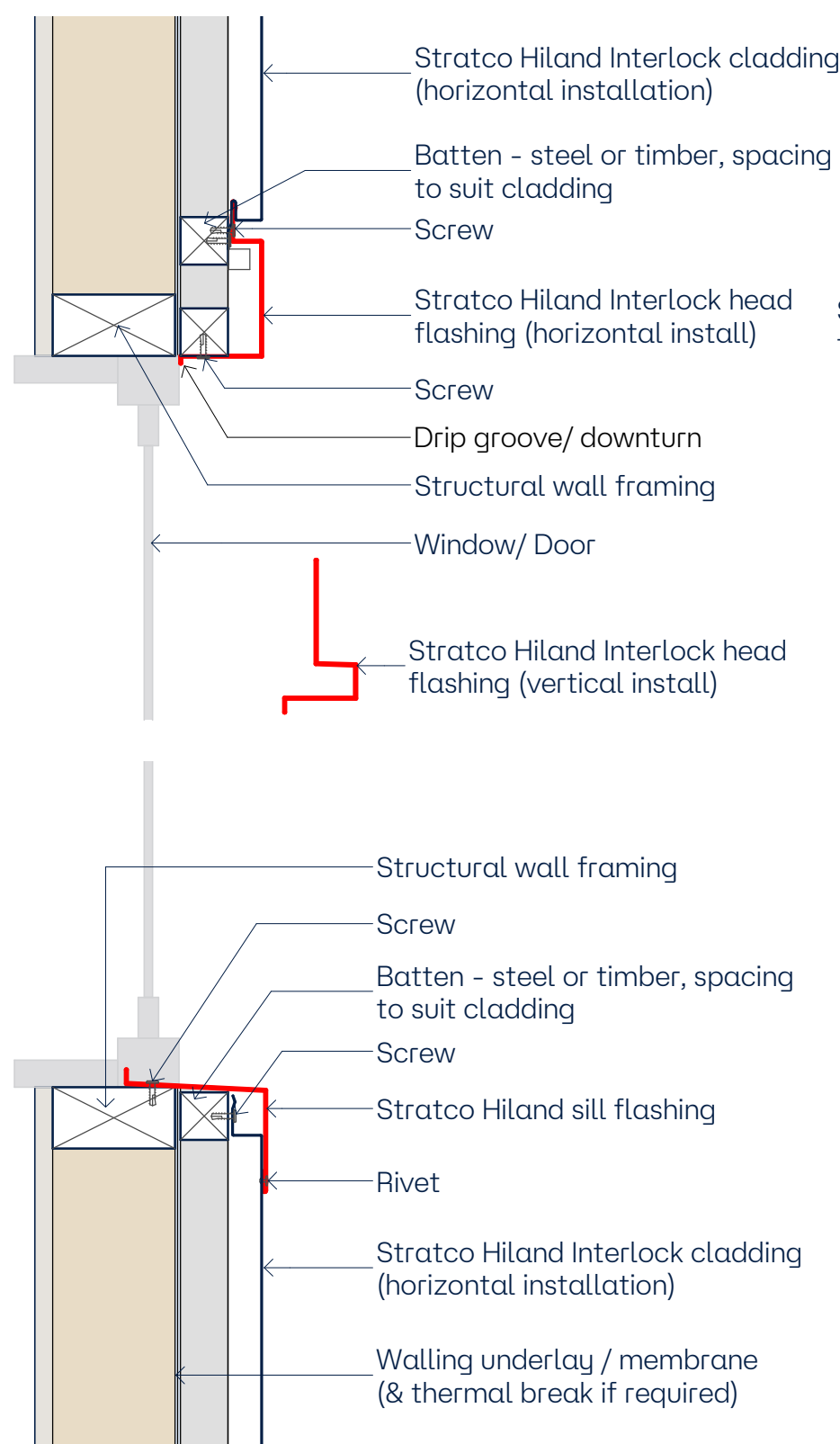
4 Hiland Interlock Parapet 1
1:5



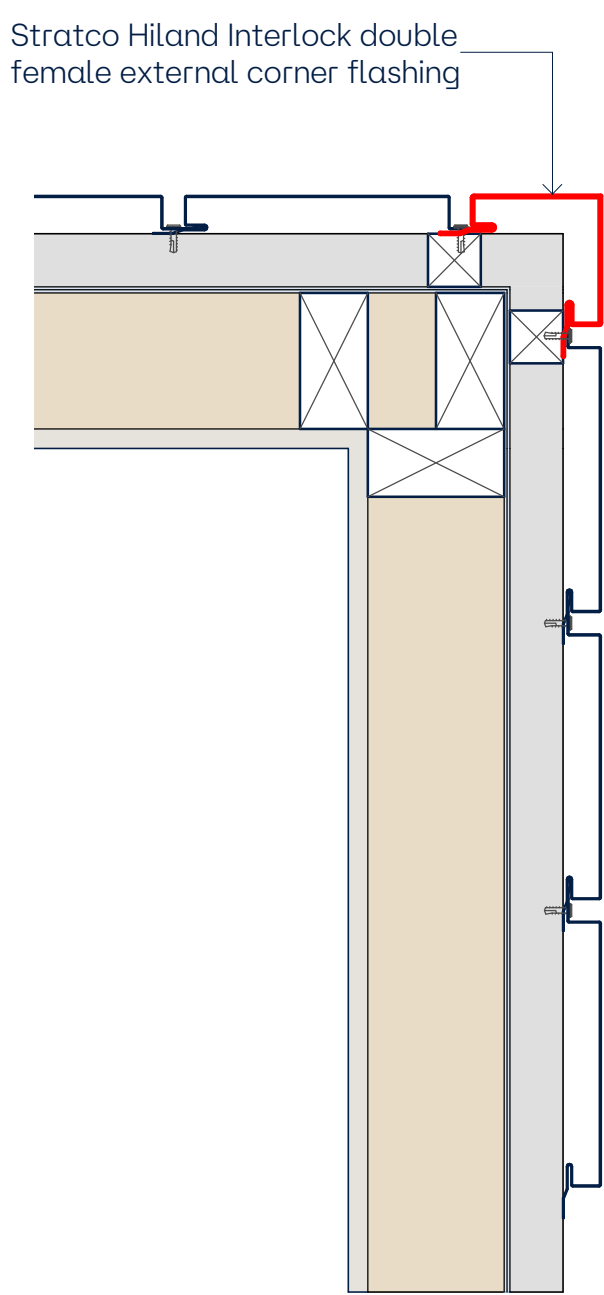
6 Detail Flashings - Hiland Interlock Jamb
1:5



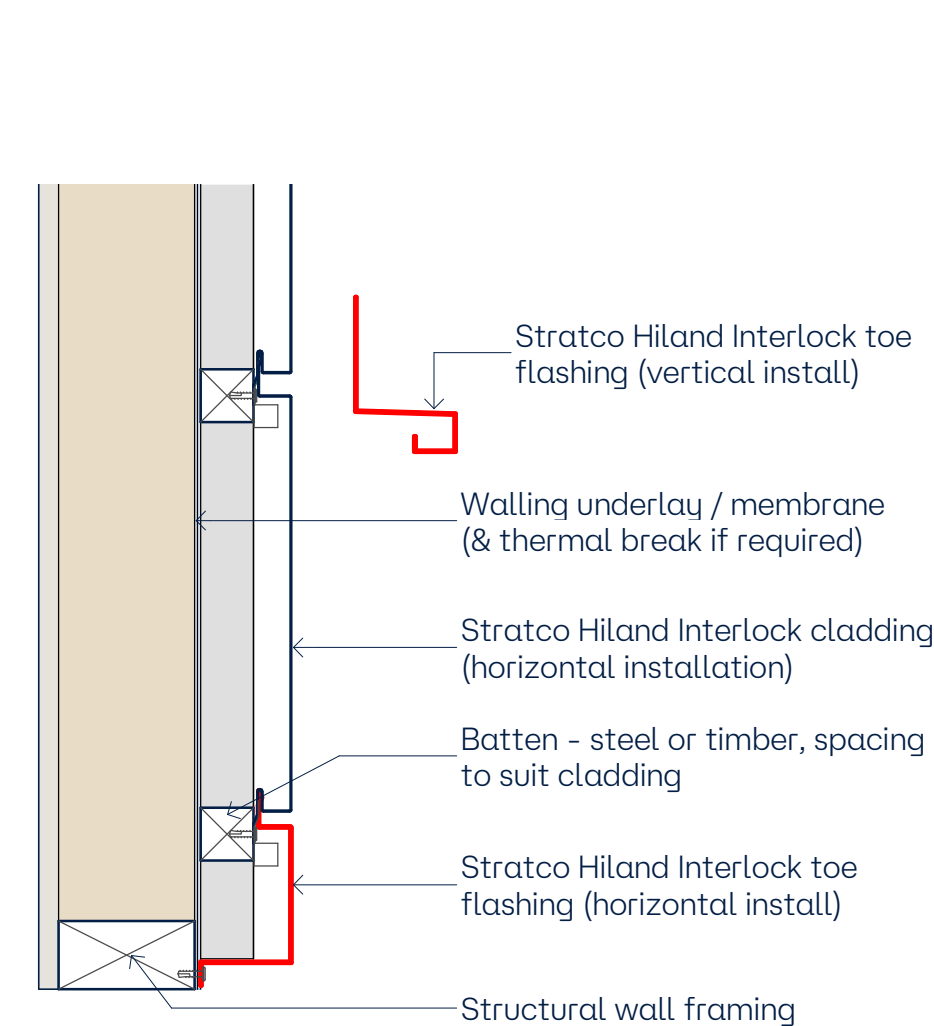
7 Detail Flashings - Hiland Interlock End Caps
1:5



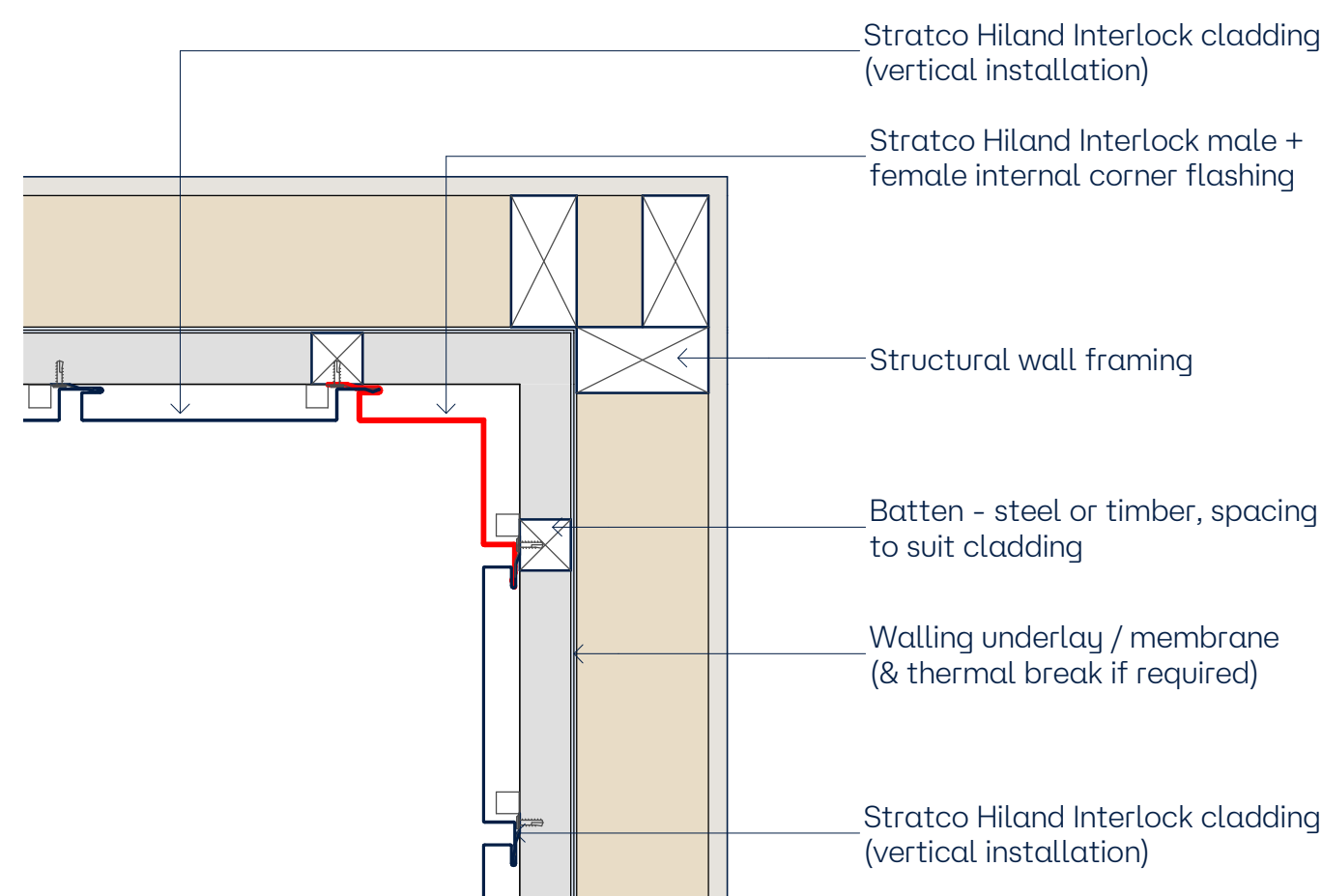
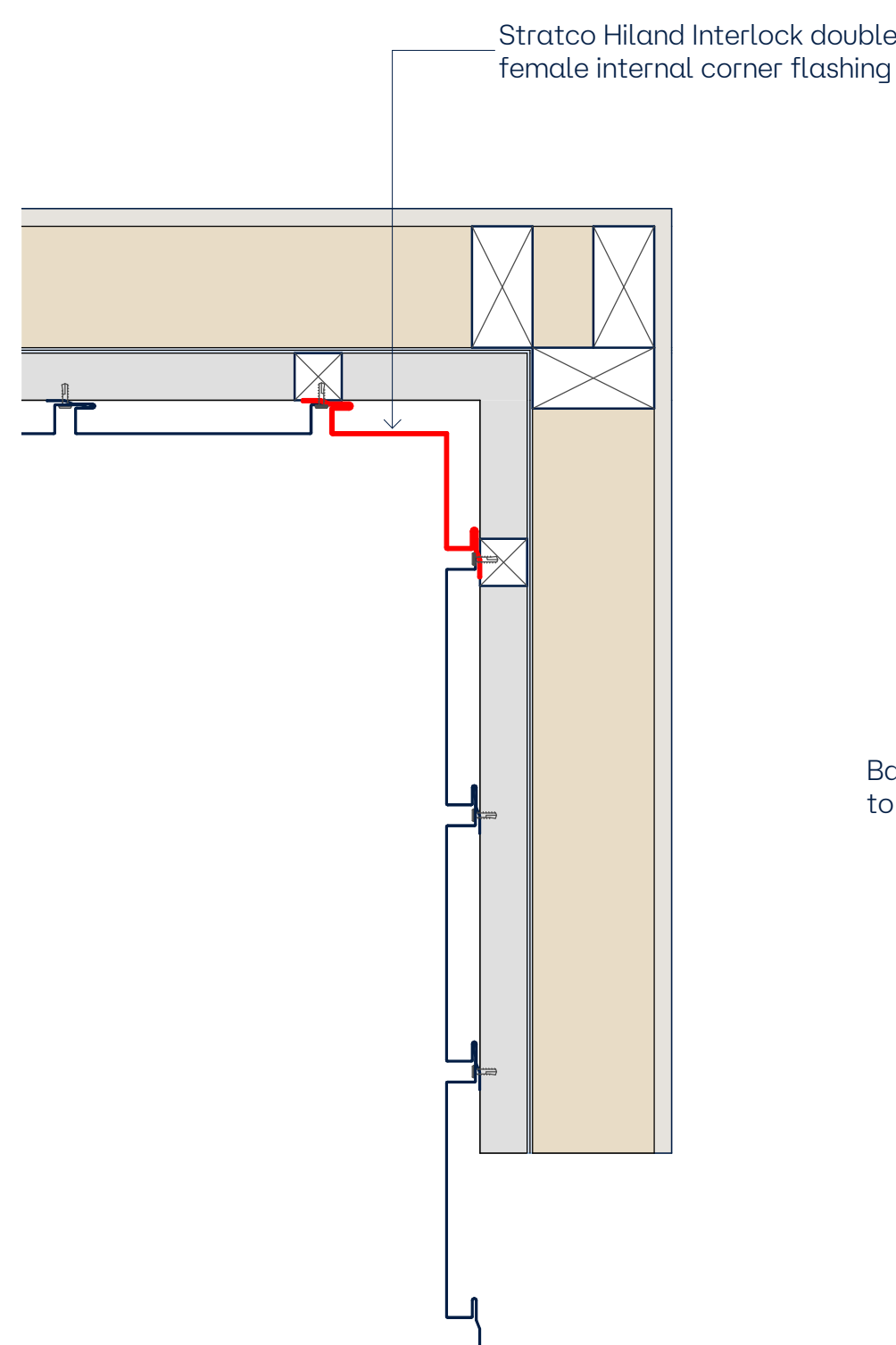
2 Hiland Interlock Opening Head & Sill
1:5



5 Detail Flashings - Hiland Interlock Corner
1:5



3 Hiland Interlock Toe
1:5



This document is to be used in conjunction with all other published information provided by the manufacturer (Stratco) including but not limited to;

- General Design Guides
- Product Specific Design Guides
- Selection, Use & Maintenance Guides

Suggested flashings and substrate details are a guide only.
It is responsibility of the designer & installer to assure compliance with Australian Standards and National Construction Code.

| No. | Description | Date |
|-----|---------------------------------------|------------|
| A | - | 30.10.2024 |
| 2 | Issued for distribution/ customer use | 19.11.2024 |
| | | |
| | | |
| | | |
| | | |
| | | |
| | | |
| | | |

Stratco Hiland Details

2D Construction Details - Hiland Interlock 2

| | |
|----------------|------------|
| Project number | 0001 |
| Date | 31.10.2024 |
| Drawn by | ASc |
| Checked by | EL |
| | 004 |
| Scale | 1:5 |